



BATTERY POWERED,
CELLULAR GATEWAY
FOR SENSOR
MONITORING



DIGI CONNECT[®] SENSOR+

Easy-to-install and roll-out ready, battery-powered cellular gateway solution

Digi Connect Sensor+ is a fully integrated, battery powered cellular gateway with I/O for connecting to a wide range of external sensors. Designed to work in rugged industrial environments, the Connect Sensor+ is the ideal solution for companies looking to add remote monitoring and diagnostics in places where power is not easily available. Its easy installation, reliability and low data usage make remote monitoring possible in areas where it was previously cost prohibitive.

Local protocol support allows the Connect Sensor+ to communicate with Wired HART and/or Modbus sensors and capture sensor diagnostics along with data. This enables users

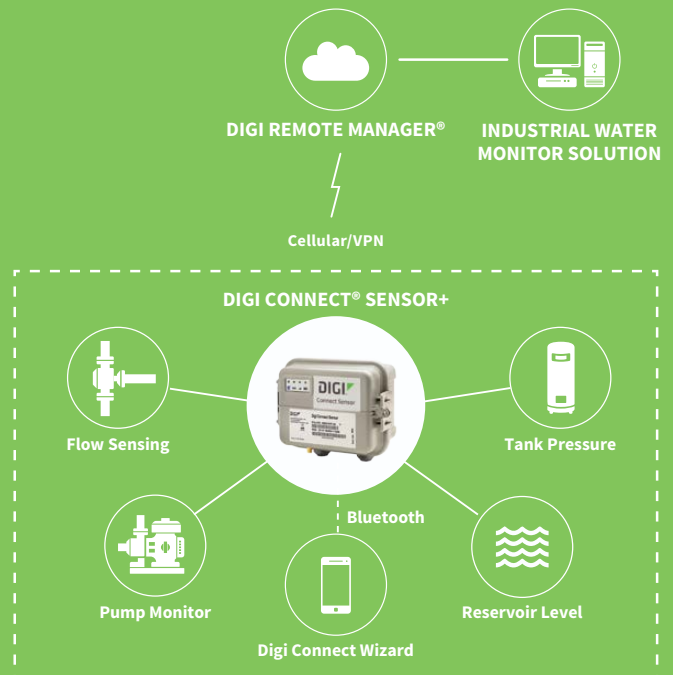
to not only monitor their data but also remotely diagnose the health of their sensors. Digi Connect Sensor+ leverages Digi Remote Manager[®], enabling customers who need to monitor large numbers of sensors to easily integrate that data into existing applications or work with third-party applications

Digi Connect Sensor+ works with Digi Connect Wizard. This smartphone application is the first of its kind for this type of battery powered gateway. It gives local installers, technicians or drivers instant feedback of sensor values over Bluetooth.

BENEFITS

- Weatherproof enclosure with wide temperature range makes it ideal for use in all environments
- Configurable read and report intervals with threshold and delta alarms
- Multiple configurable I/O make it possible to connect to multiple sensor types
- Wired HART and Modbus protocol support
- External, configurable power outputs eliminate the need for sensor power supplies
- Global cellular coverage

APPLICATION EXAMPLE



RELATED PRODUCTS



SPECIFICATIONS

Digi Connect® Sensor+

WWAN	
2G BANDS	GSM 850, GSM 900, DCS 1800, PCS 1900
3G BANDS	FDD B1, B2, B4, B5, B8
LTE CATEGORY 1	Verizon: Bands 2, 4, 13 AT&T, T-Mobile: Bands 2, 4, 5 with 3G/2G fallback
ANTENNA CONNECTOR	External SMA
SIM SLOTS	1, Standard size
MANAGEMENT	
CONFIGURATION AND MANAGEMENT	Digi Remote Manager/Local USB to Serial CLI
POWER (Does not include power draw of external sensors)	
EXTERNAL POWER INPUT RANGE	8 VDC to 30 VDC
BATTERY AND BATTERY LIFE	7.2 V, 14.5 Ah, Lithium thionyl chloride, non-rechargeable, replaceable; Approximately 2 years (@ 2 reads/transmits per day)
POWER DRAW, SLEEPING	86.4 uW
POWER DRAW, CONTINUOUS MONITOR	400 mW
POWER DRAW, PEAK TRANSMIT	14.4 Watts
SENSOR PROTOCOL SUPPORT	
WIRED HART	HART 5,7
MODBUS	MODBUS RTU AND ASCII, Connect to up to 4 devices
ANALOG I/O	
INPUTS	4, Configurable as 4/20 mA or 0-10 VDC Analog inputs
INPUT VOLTAGE RANGE	0-10.5 V (Analog input)
INPUT CURRENT RANGE	4-22 mA (Current loop input)
DIGITAL I/O	
PORTS	1 digital I/O or pulse counter input
INPUT RANGE	0-0.6 VDC logic low; 2.2 V-30 VDC logic high
MAX INPUT VOLTAGE	30 VDC
MAX PULSE COUNT FREQUENCY	2 KHZ
DIGITAL OUTPUT	Open collector output, max sink current 450 mA
OUTPUT POWER	
PORTS	5
OUTPUT VOLTAGE OPTIONS	3.3, 5, 15, 24 VDC
MAX CURRENT OUTPUT	200 mA
ENVIRONMENTAL	
OPERATING TEMPERATURES	-35° C to +70° C
STORAGE TEMPERATURE	-40° C to +85° C
RELATIVE HUMIDITY	90%
BATTERY DISCHARGE	<1%/year if stored at +30° C
PHYSICAL	
DIMENSIONS (L x W x H)	152.4 mm x 108.4 mm (127 mm including glands) x 74.6 mm
WEIGHTS	264 g
LEDS INDICATORS	Battery, cellular, sensor and Bluetooth
ENCLOSURE MATERIAL	Lexan
REGULATORY APPROVALS	
SAFETY	UL60950-1, CAN/CSA C22.2 No. 60950-1-01, IEC 60950-1:2005 (Second Edition); Am1:2009 + Am2:2013, EN 60950-1:2006 / A11:2009 / A1:2010 / A12:2011 / A2:2013 and EN 60950-22:2006; Class 1, Division II, groups A,B,C,D; ANSI/ISA 12.12.01:2015,CAN/CSA C22.2 No 213-15, 1st Ed ATEX EN 60079-0:2012+A11:2013, EN 60079-15:2010, eII 3 G Ex nA nC IIC T6 Gc
EMISSIONS	FCC part 15 Subpart B class B, EN55022: 2010/AC: 2011 class B, IECs-003 Issue 5: 2012 class B
IMMUNITY	EN55024:2010
WARRANTY	
PRODUCT WARRANTY	3 years, excluding battery

PART NUMBERS	DESCRIPTION
CSENSE-A210	Connect Sensor+, Verizon LTE
CSENSE-A310	Connect Sensor +, AT&T and T-Mobile LTE
CSENSE-A710	Connect Sensor+, Global 3G/2G

Antennas are sold separately

FOR MORE INFORMATION
PLEASE VISIT WWW.DIGI.COM

DIGI SERVICE AND SUPPORT / You can purchase with confidence knowing that Digi is always available to serve you with expert technical support and our industry leading warranty. For detailed information visit www.digi.com/support.

© 1996-2017 Digi International Inc. All rights reserved.
All trademarks are the property of their respective owners.

91003579
A4/917

DIGI INTERNATIONAL WORLDWIDE HQ
877-912-3444 / 952-912-3444 / www.digi.com

DIGI INTERNATIONAL GERMANY
+49-89-540-428-0

DIGI INTERNATIONAL JAPAN
+81-3-5428-0261 / www.digi-intl.co.jp

DIGI INTERNATIONAL SINGAPORE
+65-6213-5380

DIGI INTERNATIONAL CHINA
+86-21-50492199 / www.digi.com.cn

